

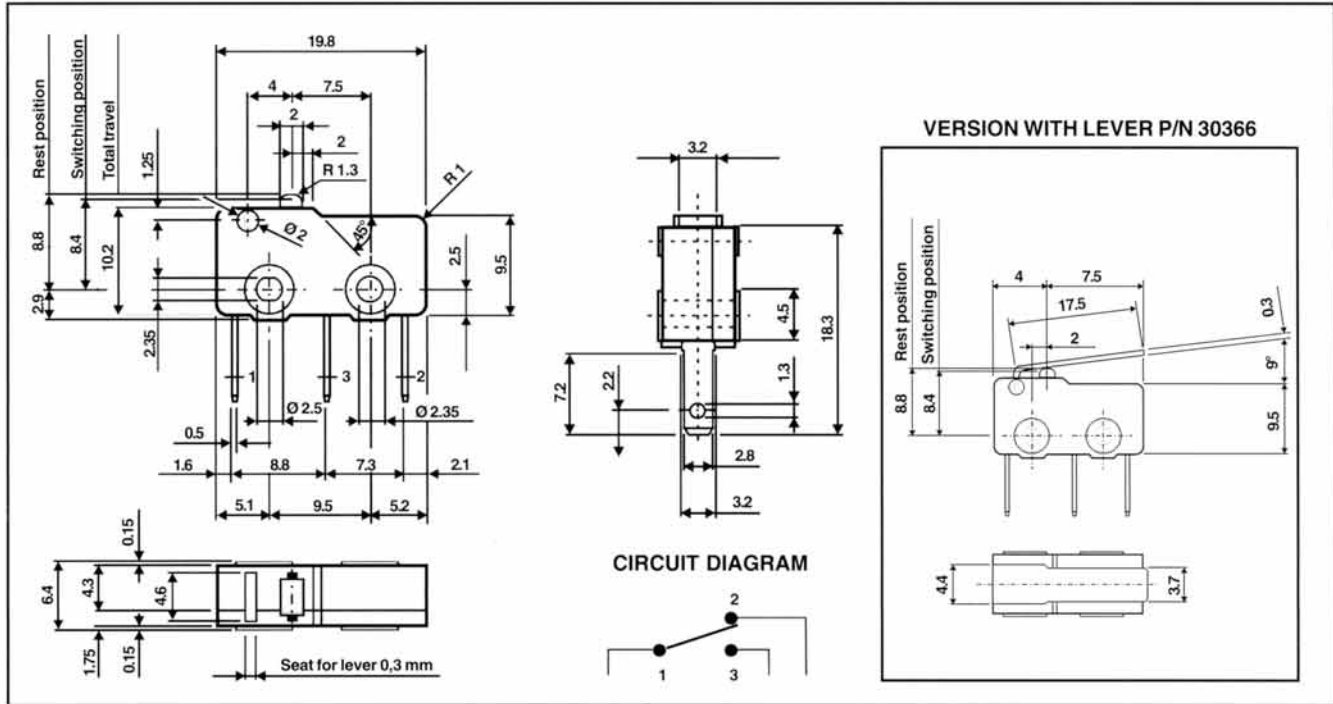
# MICRORUPTEUR

Subminiature



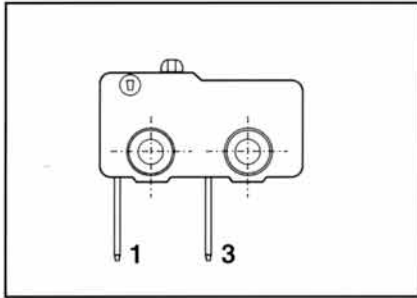
Série **M5**

## Dimensins

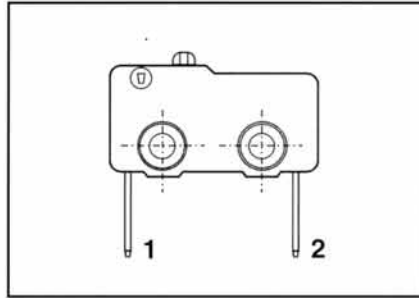


## Versions

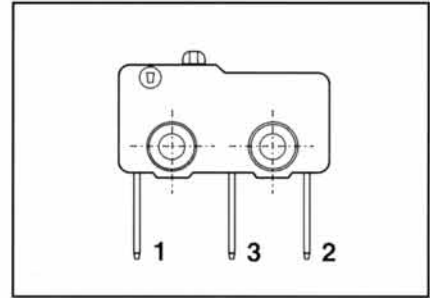
**NORMALLY OPEN**



**NORMALLY CLOSED**

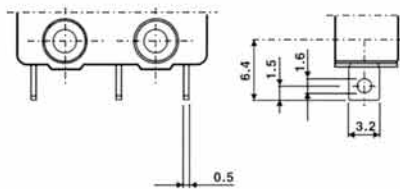


**2 WAY SWITCH**

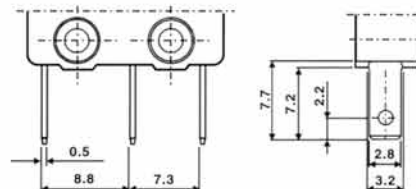


## Terminal configuration

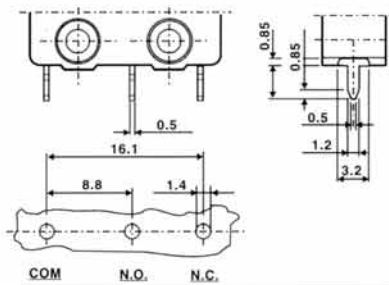
**TABS FOR SOLDERING**



**2,8x0,5 FASTON**



**PINS FOR SOLDERING ON PCB**



**FORKED TABS FOR SOLDERING**

